





“ ”

2014

“ ”

2014

- 1. 2010-2011 2012.04
- 2. 2011-2012 2012.12
- 3. 2012-2013 2013.12
- 4. 2013-2014 2014.12
- 5. 2011 2011.05
- 6. 2012 2012.05
- 7. 2013 2013.05
- 8. 2014 2014.05
- 9. 2011 2011.12
- 10. “ ” 49 -70 2011-2014
- 11. 2012.09
- 12. (2010-2020) 2010.06
- 13. (2010-2020) 2010.10
- 14. “ ” 2020 2010.12
- 15. 2010.09
- 16. 2006.07

2015 5

2011 2014 2012

2014

149 2014 1 307

84.4% 2013 3.4%

622 2014 98.55% 17 3

101 2013 9.3% 2014 89

1752 2013 180 4 65.28% 2014

2014

“ ”

2012

67 2013 39476

2014 23036 58.35% 1125

2014 12 5140 126

2810 607 21.60%

61.14% 18.68

17.07 1.61

2014 2331 82.95%

79.54% 3.41 11.44%

11.03% 0.41% 2014

74.18% 75.2% 7.7371 0 D<044305246915 8040.6514 0 D<103.042(18%)436091

2014<@01E

290
 2014
 10558
 565
 307
 10703
 4634
 310
 149
 2014
 101
 2014
 27.30%
 1882
 2
 89
 370
 24.05%
 257
 113
 1
 10
 11
 2

2014
 2013-2014
 2013
 65-70

2014[49]
 2

2013
 69%
 2011
 74%
 5345
 1.68%
 2014
 0.19%
 90.99
 5425
 15.68%
 98.53%
 15.68%
 92.52
 5645
 15.68%
 14.55%
 2014
 1.53
 14%
 98.74%
 1.13%

2013
 65%
 94%
 9
 "211"
 2013
 2013
 91%
 3
 74%
 "211"
 94%
 2013
 2012

2014

332 200
23
1 2
10
370
46 2013 15% “ ” 1752 2013
65.28%

100%

.....	- 1 -
.....	- 1 -
.....	- 2 -
.....	- 3 -
.....	- 4 -
.....	- 6 -
.....	- 6 -
.....	- 8 -
.....	- 9 -
.....	- 11 -
.....	- 12 -
.....	- 13 -
.....	- 14 -
.....	- 14 -
.....	- 15 -
.....	- 16 -
2013	- 16 -
.....	- 18 -
.....	- 18 -
.....	- 19 -
.....	- 22 -
.....	- 24 -
.....	- 25 -
.....	- 27 -
.....	- 27 -
.....	- 27 -
.....	- 28 -
.....	- 29 -
.....	- 36 -
.....	- 36 -
.....	- 37 -
.....	- 42 -
.....	- 44 -
.....	- 45 -
.....	- 45 -
.....	- 46 -

1.

“ ”

2.

3.

“ ”

4.

→

“

”

“

”

→

,

2014

→ 2013

2013-2014

→

4.

→ “ ”

→ “ ” 70

60 80

1.

→ 2014

7300

→

→

2.

→ 10 5

→ 400

332 200

→ 2014

23

3.

→ 2 1



10

→ 4 3

2014

→ 2014 12

89 101 180

4.

→

46 2013 15%

→ 56 2013

100% 1752 2013 26%

→ “ ” 77 77

2015

1.

→

→

→

2.

→

→

→ “ ”

MOOC

→

3.

→

→

→

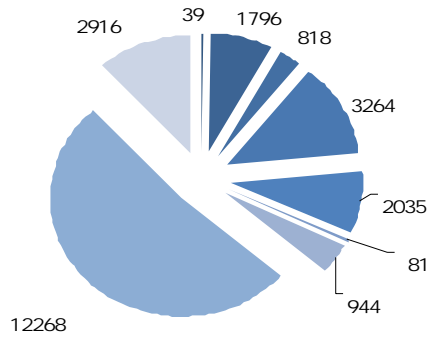
4.

→

→

→

1. / /
 23036 10874
 1125



2-1 2014

2. /

(1)

	34	1295	37	1258		/	15	84	82

(2)

	01	540	22557	0	0	43
	02	536	21641	0	0	43

2014 9

3.

1 ,

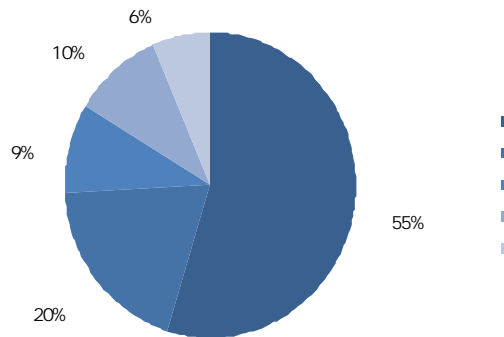
2

3

4.

1		45	8000	6
2		922	5000	5
3		62	8000	3
4		4	5000	4
5		95	1000	
6		20	10000	
7		6055	500-4000	1015
		6196		

1.



2-2

5140

126

2.

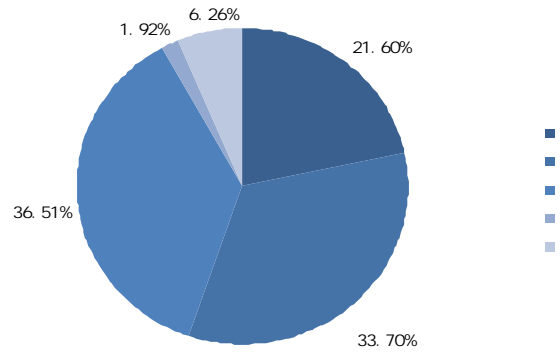
/ /

1		2810	18.68	3067 ¹
2		1005	57.00	
3		488	117.39	
4		512	111.89	
5		325	176.27	
		5140		57288.7 ²

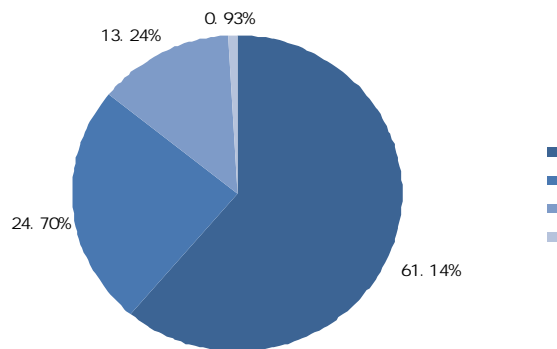
1 + *0.5 =
 2 " "2013-2014
 2014 9

3.

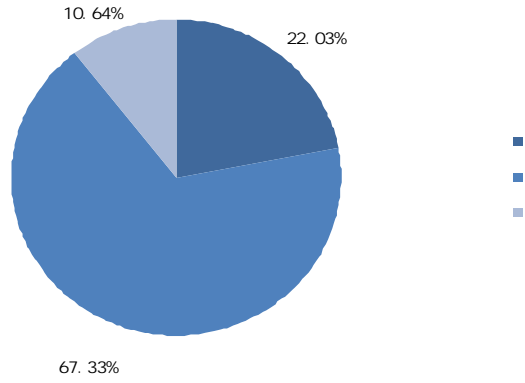
/ /



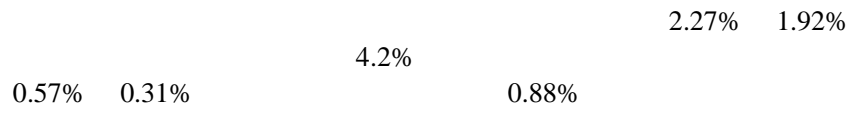
2-3



2-4



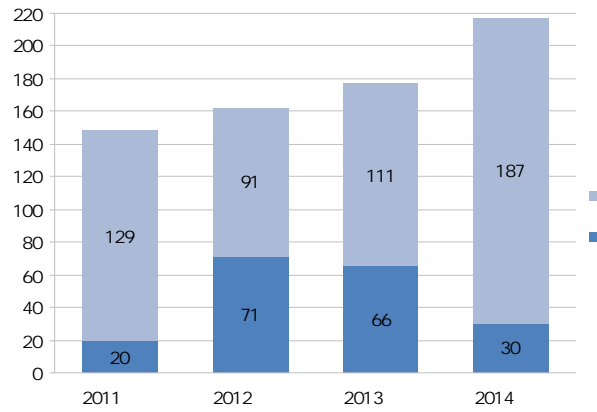
2-5



4.

2011

2014



2-6 2011-2014

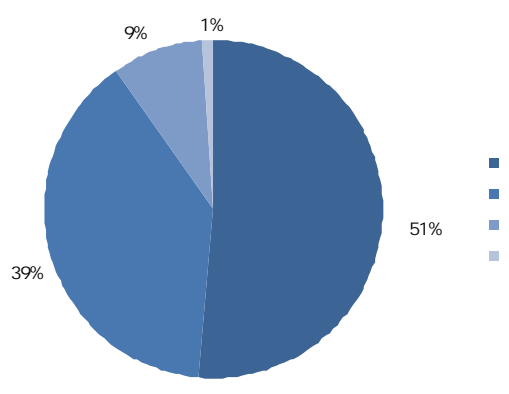
T

	15.28	↑	14
	23330.74	↑	5000
	67.29	↓	100
	53%	↑	30
	46.55	↓	54
	9.44	↓	6.5
	51.19	↓	10
	12.5%	↓	10
	0.63	↑	4

1. "2013-2014
 2. 57288.7 39476 3067
 2014 9

1.

2014 212 367.64

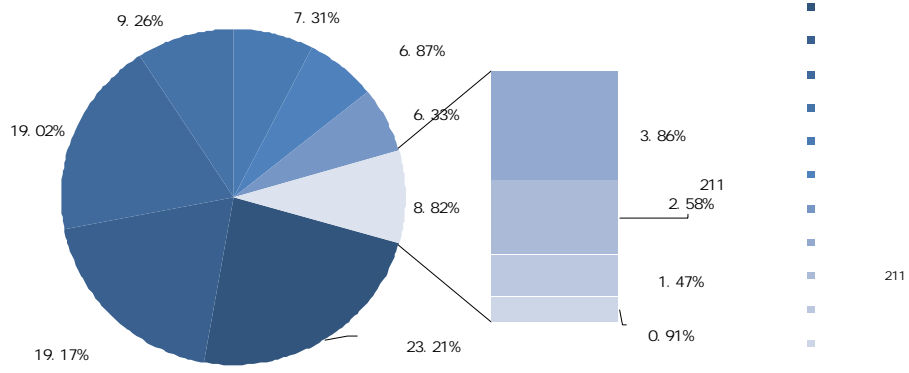


2-7 2014

3 6 17,233.05

2.

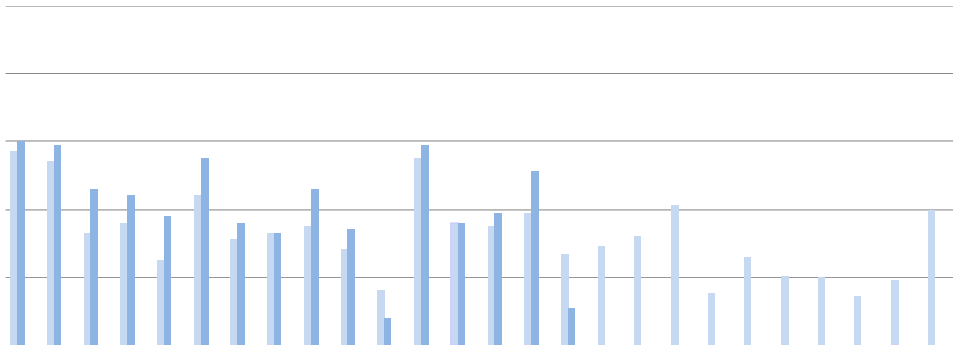
2014 246,991.08



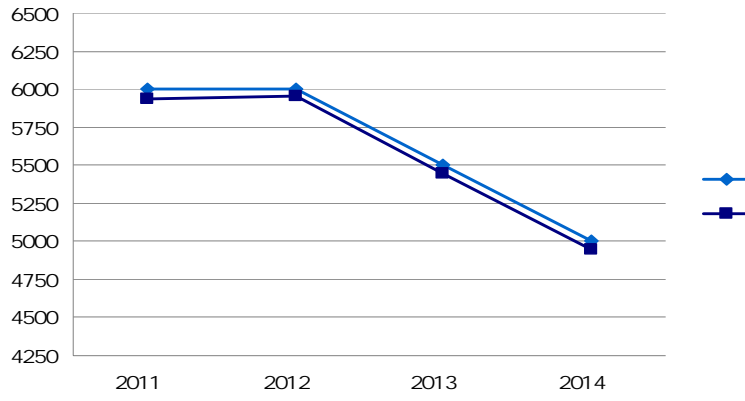
2-8

2014

211

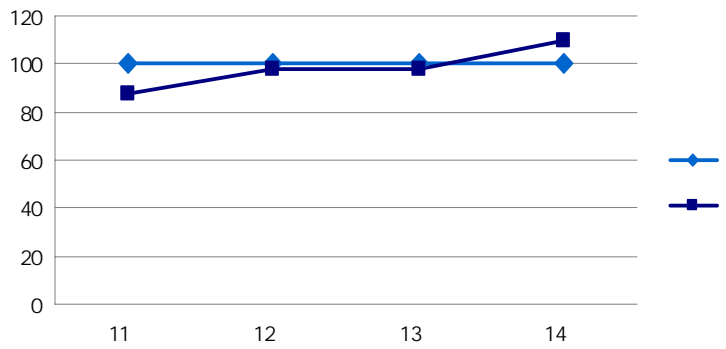


2011-2014



3-3 2011-2014 /

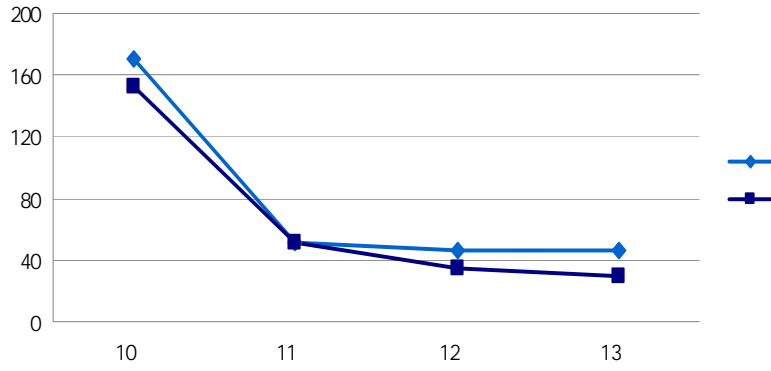
2012



3-4 2011-2014 /

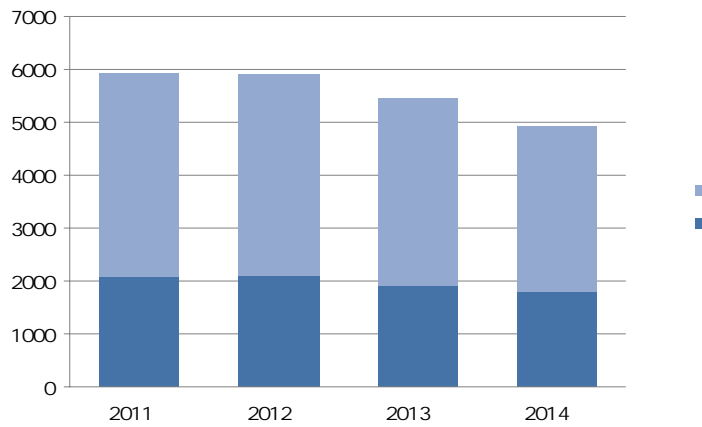


3-5 2011-2014 /



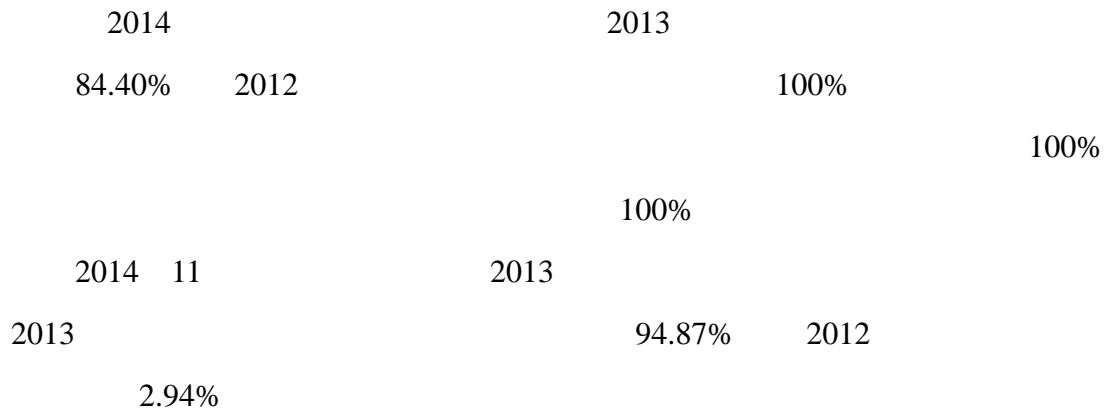
3-6 2011-2014 /

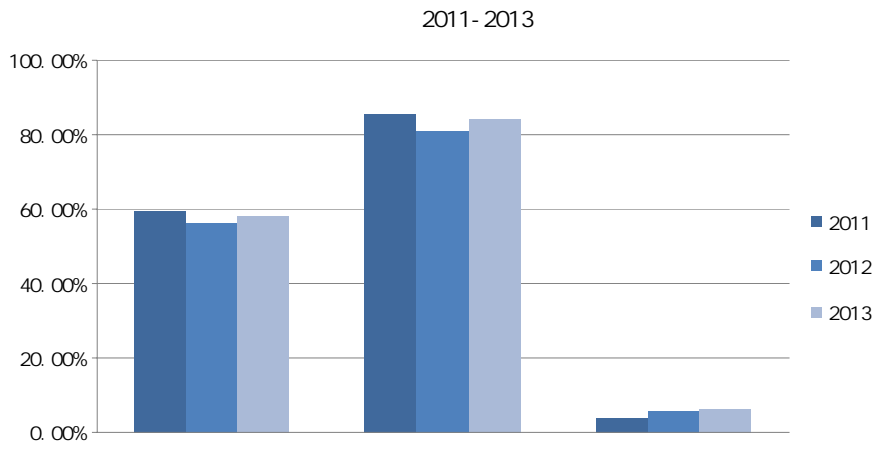
2011 -2014



3-7 2011-2014

2013





3-8

2011-2013

2014

2015 6

2014

1. 2011

	22	1	85	70-78	30	10	60	290
	32	1	91	75-84	30	10	50	290
	36	1	70	93-102	30	10	50	290

- 290
- 2 1
- 10
- 15% 25%

2. 2012

	22	2	94	75	30	10	60	290
	32	2	95	80	30	10	50	290
	36	2	70	95	30	10	50	290

2011

3. 2013

	22	2	95	75	30	10	60	290
	32	2	95	80	30	10	50	290
	36	3	70	95	30	10	50	290

2011

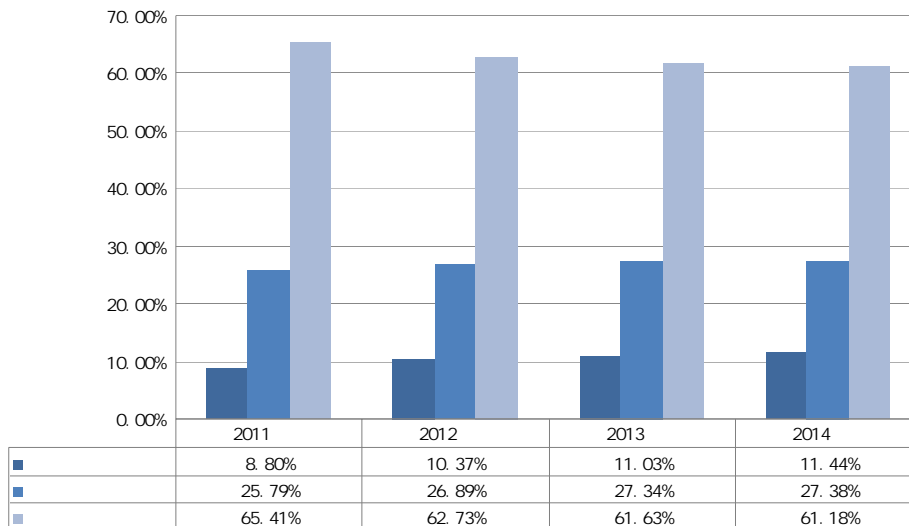
4. 2014

	22	2	95	70	[25,30]	10	60	290
	32	2	95	70	[25,30]	10	50	290
	36	3	70	90	[25,30]	10	50	290

- 290
- 2 1
- 10
- 15% 25%

1.

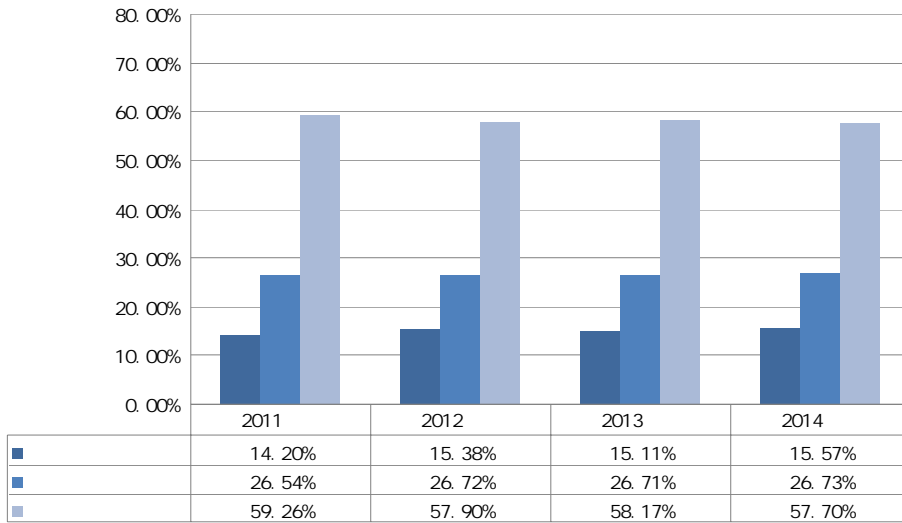
1



4-1 2011-2014

- = /
- = /
-

2



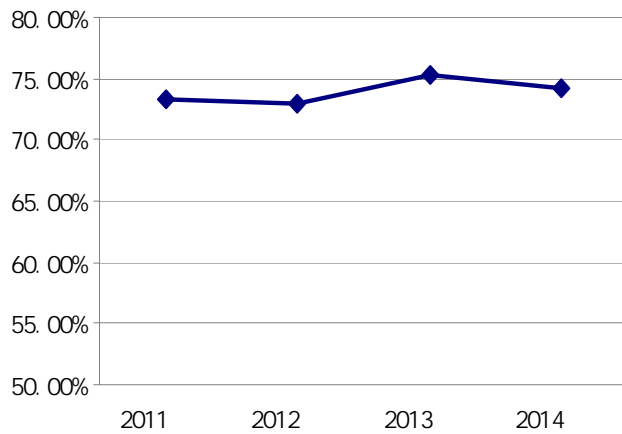
4-2 2011-2014

-
-
-

$$= \quad /$$

$$= \quad /$$

3



4-3

2.

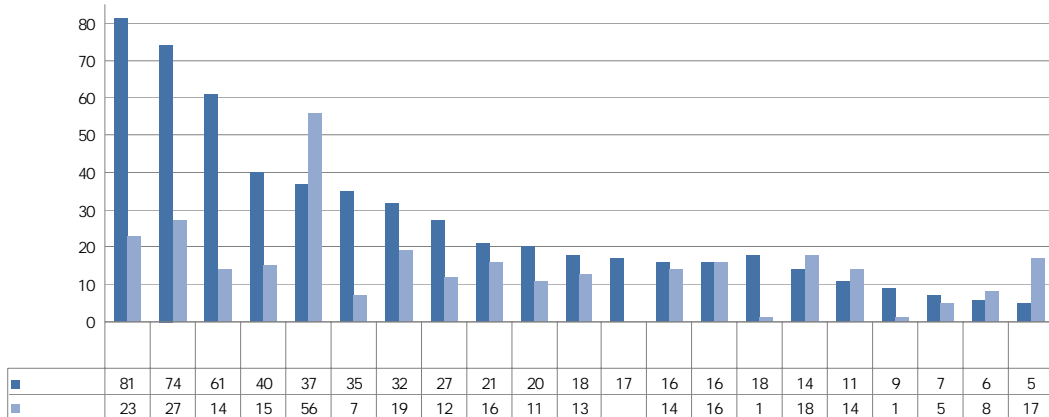
2011

2014

307

565

149



4-4

2014.12

-
-

2014 12 31

4-4

3.

2014

18.69

15.97

17.03%

4-1 2014

		/		
		138	10017	100%
		223	9304	
		329	34334	
		195		
		885	64196	

2014

1.

2011	4	62	107
2012	1	40	123
2013	29	103	125
2014	89	101	180

2.

2011		200	837
2012	85	200	1176
2013	67	200	1121
2014	73	220	1882

2007 “ ” 2008
 “ ” 2014 220 2014
 315 “ ”

3.

	2012-2013			2013-2014		
	15653	2687	12966	15438	4296	11142
	2552	0	2552	2181	0	2181
	1751	0	1751	1683	0	1683
	19956	2687	17269	19302	4296	15006
		13.46%	86.54%		22.26%	77.74%

4.

➤ RFID “ ”



RFID

RFID



1 "

"

“ ”



“ ”



“ ”

3

3-4

20



2014“ . ”



2 “ ”

1.

2014

2015

2.

2014

1

“ ”

2

2014 2

1

10

11

2014 9

“ ”

2

3.

2014 4

1

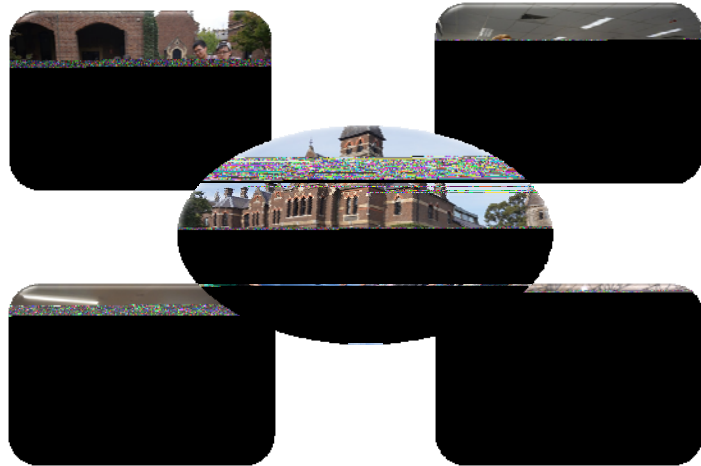
“

”

3

3D

➤ — “ ”



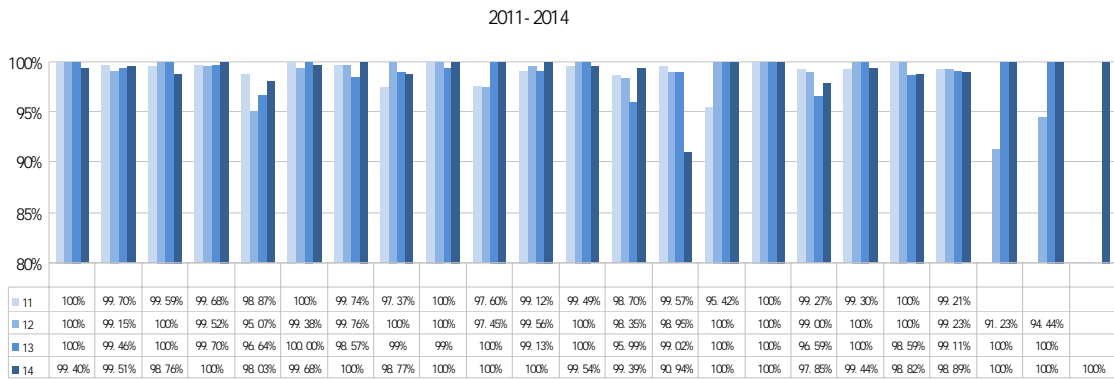
➤ — “ ”

4

➤ — “ ”

5-1 2011-2014

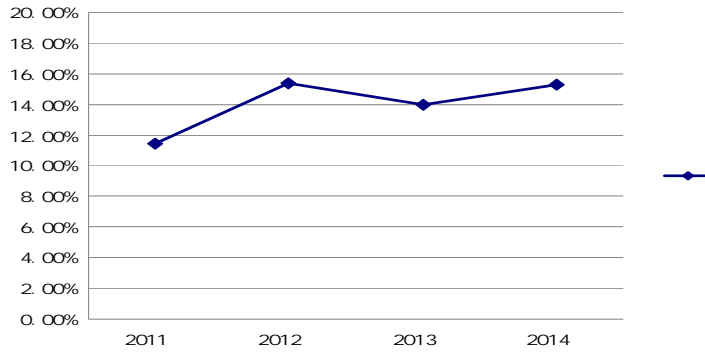
5-3



5-3 2011-2014

2014 9

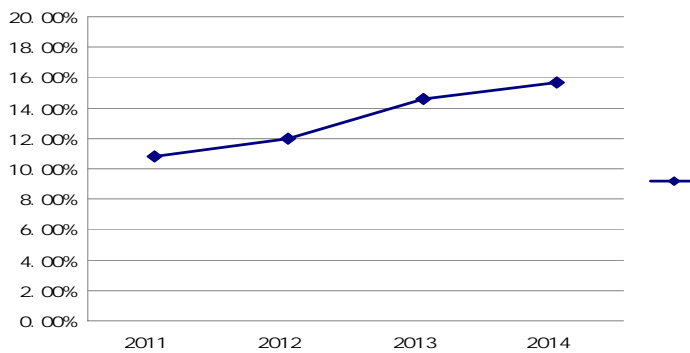
5-4 2011-2014



5-4 2011-2014

2014 9

5-5 2011-2014



5-5 2011-2014

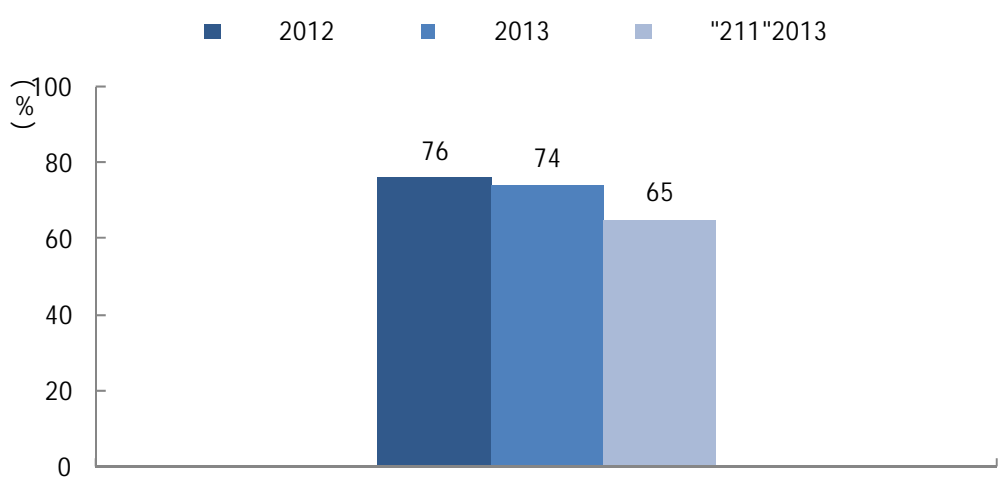
2014 9

2011 2013 2011 2014

1.

1

2013 74% 2012 76%
2 "211" 2013 65% 9

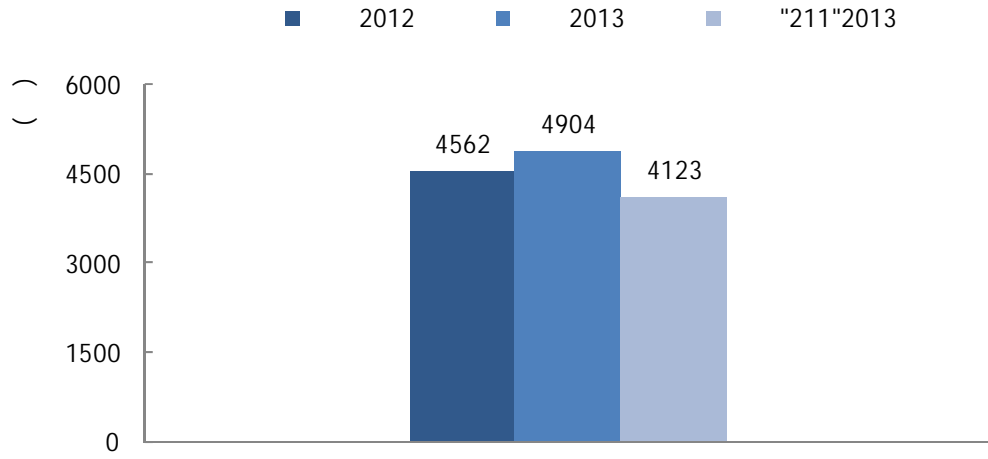


5-6 2013

- 2013

1 2013

2.



5-8 2013

- 2013

2013 65% 2012 64%

“211” 2013 73% 8

“ ” 43%

2013 53% 2012 54%

“211” 2013 44% 9

2013 37%

32%

2013 15% 2012 14%

“211” 2013 13% 2

1. 4

2013 “ ”

“ / / / / ” “ / ” 7

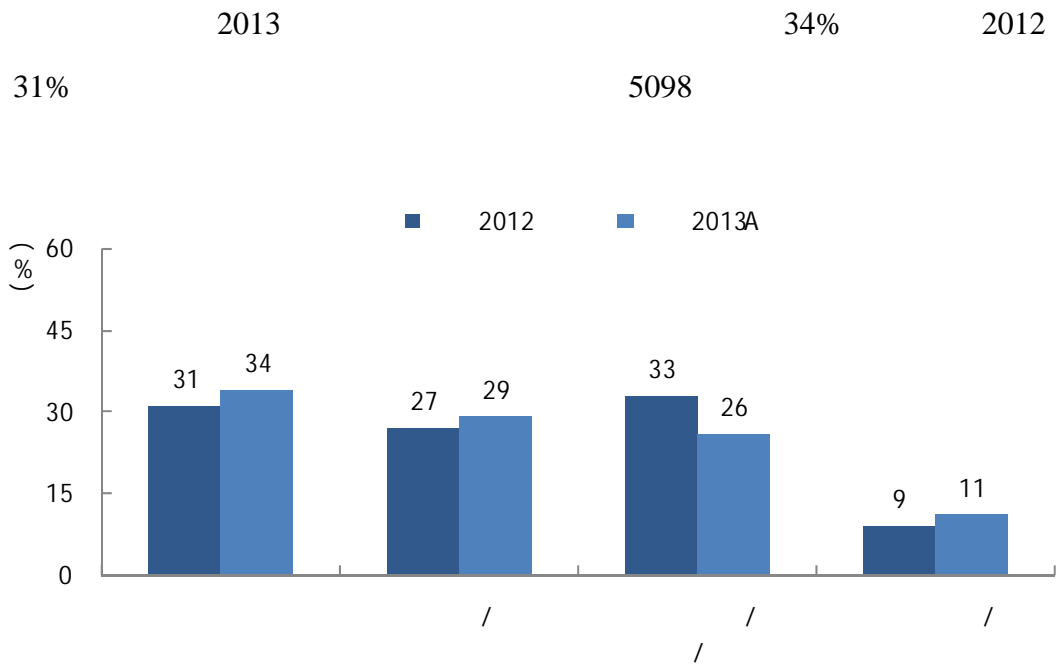
5-1

2013

8

	%	

3.



5-9 2013

2013 - 2013

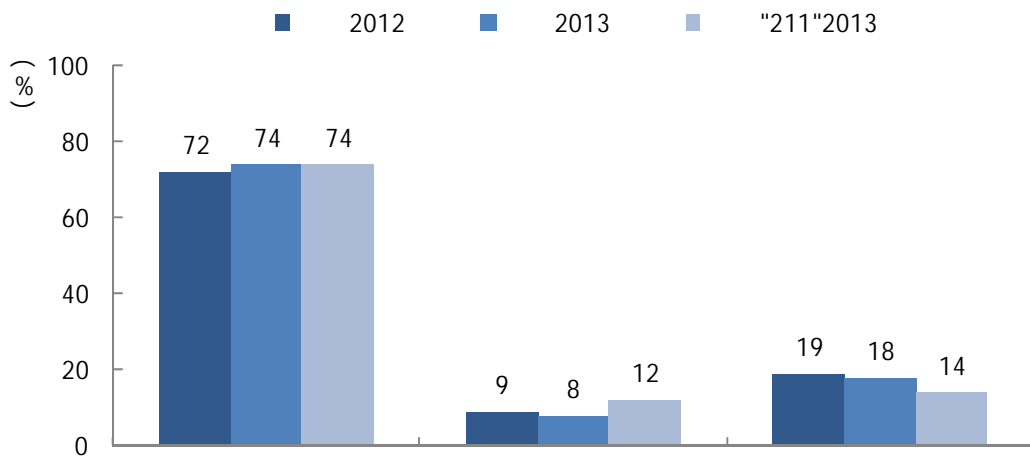
1.

6

2013 74% 2012 72%

2 “211” 2013 74%
8% 2012 9% “211”

2013 12% 4



5-11 2013 %
- 2013

2.

7

2013 94% 2012 94%

“211” 2013 91% 3

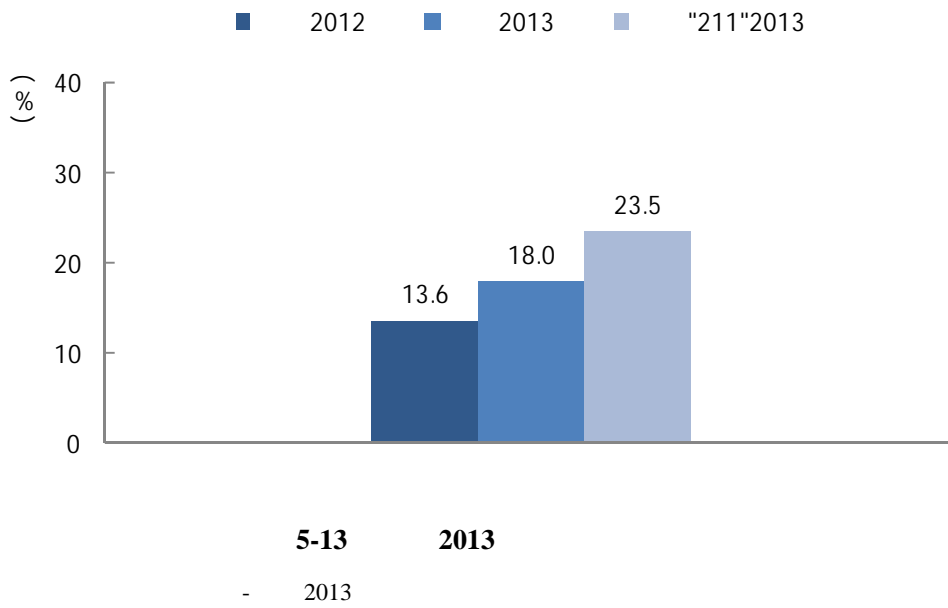
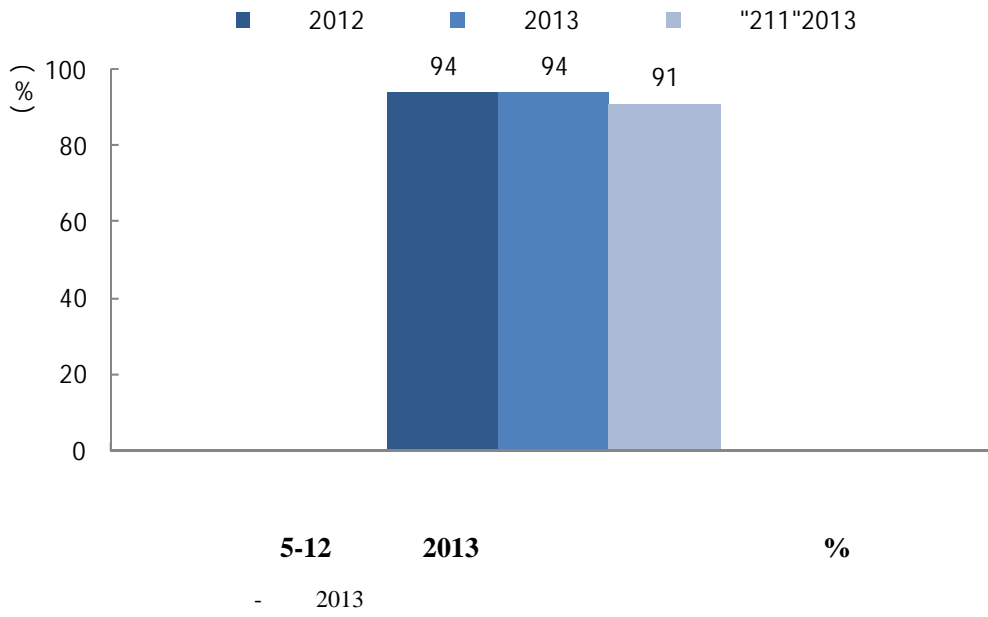
6

“ ” “ ” “ ” “ ”

7

“ ” “ ” “ ” “ ” “ ” “ ” “ ”

“ ” “ ” “ ” “ ” “ ” “ ” “ ”



	2012	2013	"211"
2013	18.0%	13.6%	4.4
2013	23.5%	5.5	9.3%
2013	9.0%	3.4%	5.9



2014

65-70

"

2013-2014

"

2013

"

"

2014

1.

KPI

2014

3.2

2013

2.

2014

2014

3.

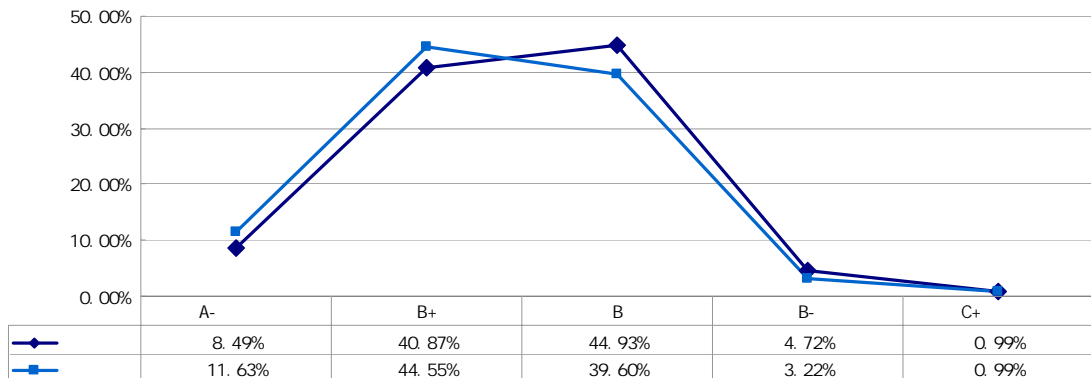
“ ”

2014 90.99% 2013
 54.52% 94.87% B+
 6.85%

4.
 2014

()

2014
 2119 20.07% 404
 1715



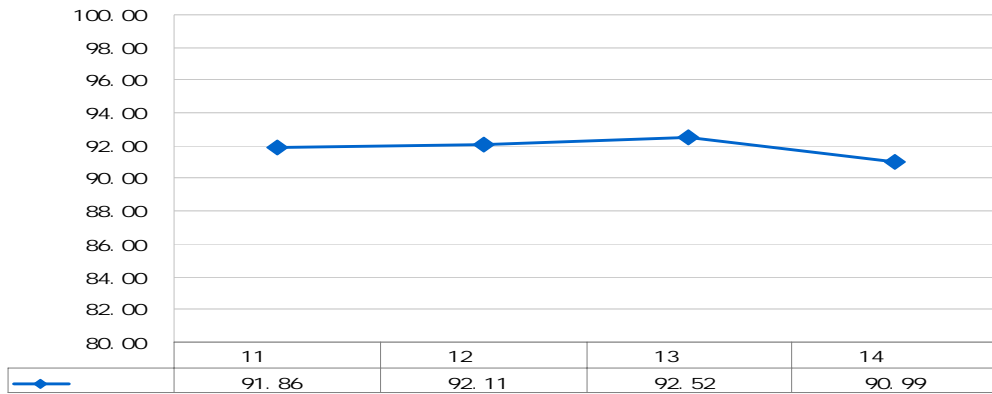
6-1 2014

“ ” 65-70

()

1.

1



6-2 2011-2014

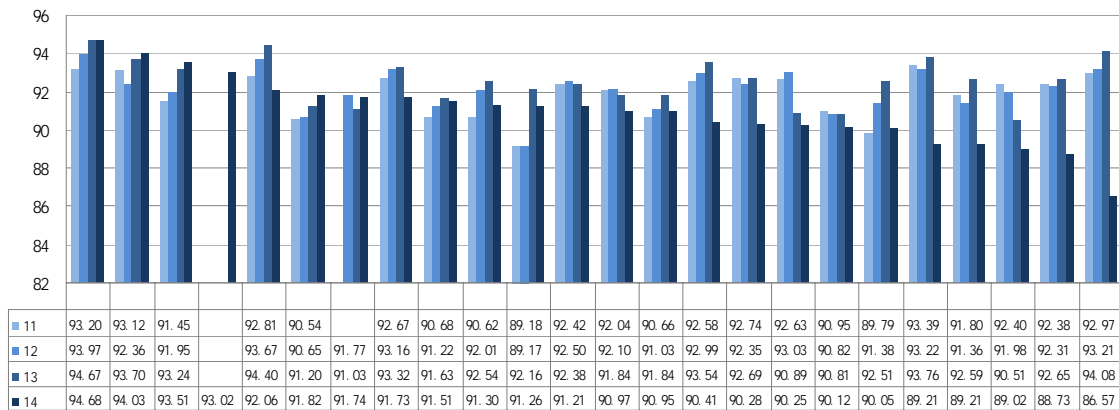
2011-2014

2

2014

6-3

2011-2014



6-3 2011-2014

2011-2014

2.

2014 9

23

6-1 2014

6-1

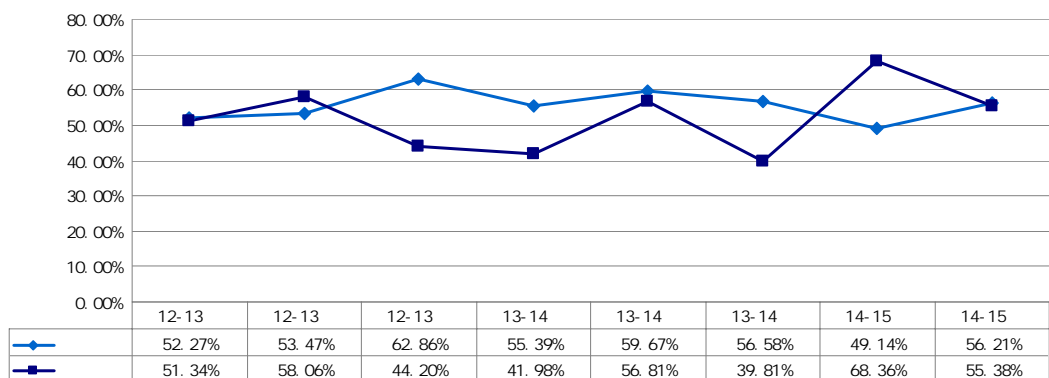
	14-15	3029	1623	53.58	405	13.37	1788	59.03	236	7.79
	14-15	309	186	60.19	31	10.03	198	64.08	17	5.5

	13-14	4906	2776	56.58	865	17.63	2971	60.56	645	13.15
	14-15	2969	1325	44.63	486	16.37	1498	50.45	293	9.87
	14-15	6097	3415	56.01	733	12.02	3573	58.6	521	8.55

	13-14	1304	801	61.43	193	14.8	854	65.49	157	12.04
	14-15	3164	1877	59.32	253	8	1967	62.17	164	5.18
	14-15	2763	1423	51.5	319	11.55	1598	57.84	262	9.48

	13-14	22625	12058	53.3	3938	17.41	14644	64.72	2743	12.12
	14-15	21910	10194	46.53	2712	12.38	12293	56.11	1895	8.65
	14-15	24771	10566	42.65	3858	15.58	13608	54.94	2598	10.49

6-4

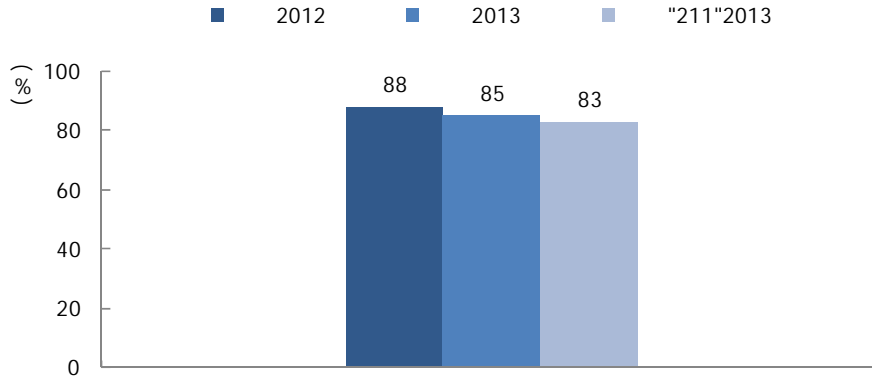


6-4 2012 9

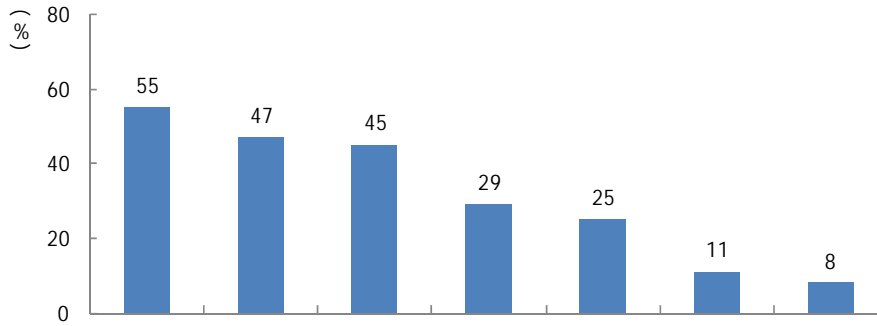
B+

()

1.



6-5 2013 %
- 2013
2013 85% 2012 88%
3 "211" 2013 83% 2



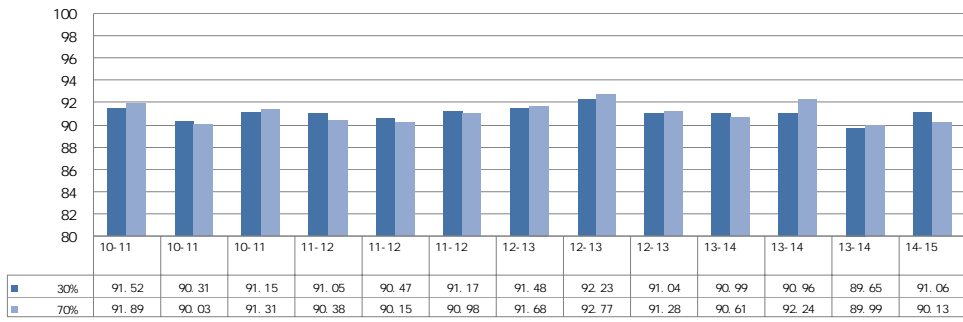
6-6 2013
- 2013

“ ”
55% “ ” 47% “ ”
45% 72%
“ ” 48% “ ”

3.

2013

6-10



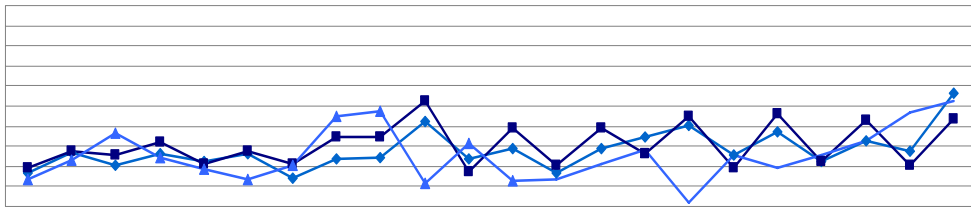
6-10 2011-2014

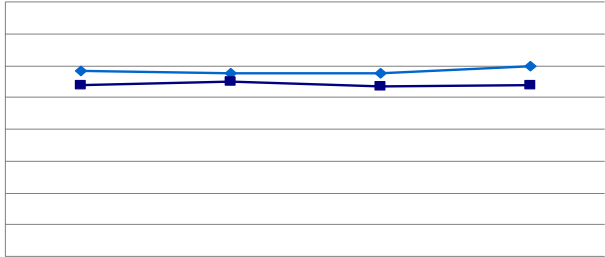
2.

2011 -2014

49 -

70





1.

2014 9

100%

2.

100%

3.

4.

1.

2.

3.

2011

4.